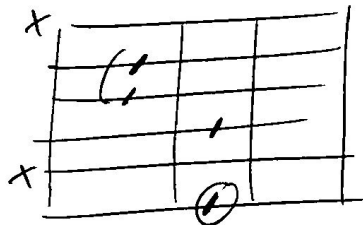


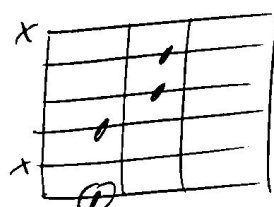
# Advanced Progressions - Part 1

C<sub>9</sub> (#11)



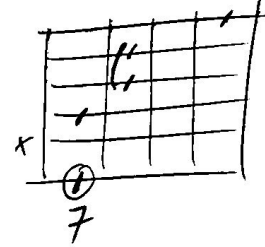
8

B<sub>7</sub> (#5)



7

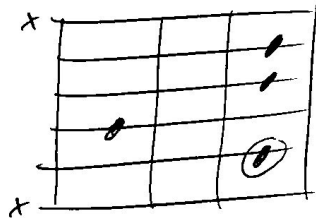
B<sub>7</sub> (#5) (#9)



7

A<sub>9/13</sub>

E<sub>mi9</sub>

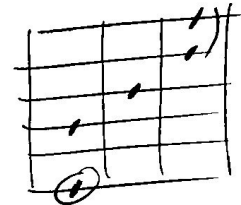


7

A<sub>13</sub>

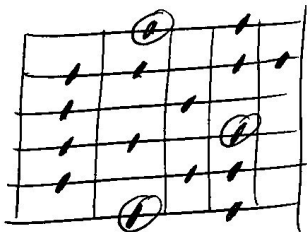


5



5

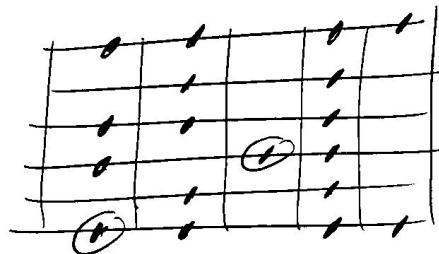
C Lydian dominant



8

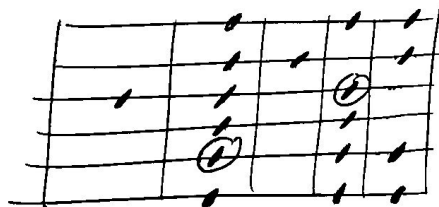
E Dorian

B Altered / Superlocrian

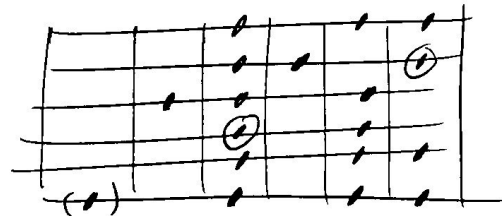


7

A mixolydian



7<sup>o</sup>



(1)



TB MUZIEKLES

1.) Scales 1st octave (7.30)

C<sub>9</sub> (#11)

B<sub>Alt.</sub>

Handwritten musical notation for the first octave of C<sub>9</sub> (#11) and B<sub>Alt.</sub> scales. The notation is on a five-line staff. The C<sub>9</sub> scale is written as 8 10 7 9 10 7 8 10. The B<sub>Alt.</sub> scale is written as 7 8 10 11 8 10 7 9.

E<sub>mi9</sub>

A<sub>13</sub>

Handwritten musical notation for the first octave of E<sub>mi9</sub> and A<sub>13</sub> scales. The notation is on a five-line staff. The E<sub>mi9</sub> scale is written as 7 9 10 7 9 6 7 9. The A<sub>13</sub> scale is written as 7 9 6 7 9 7 8 10.

2.) Scales 2nd octave

C<sub>9</sub> (#11)

B<sub>Alt.</sub>

Handwritten musical notation for the second octave of C<sub>9</sub> (#11) and B<sub>Alt.</sub> scales. The notation is on a five-line staff. The C<sub>9</sub> scale is written as 10 7 9 7 8 10 11 8. The B<sub>Alt.</sub> scale is written as 9 10 7 8 10 8 10 7.

E<sub>mi9</sub>

A<sub>13</sub>

Handwritten musical notation for the second octave of E<sub>mi9</sub> and A<sub>13</sub> scales. The notation is on a five-line staff. The E<sub>mi9</sub> scale is written as 9 7 8 10 7 9 10 12. The A<sub>13</sub> scale is written as 7 9 6 7 9 7 8 10.



# 3.) PATTERNS

C<sub>9</sub> (#11)

BAlt.

Handwritten musical notation for the first system. The top staff shows a guitar fretboard with fingerings: 8 10 7 10 7 9 7 9 10 9 10 7 10 7 8. The bottom staff shows a bass line with fingerings: 7 7 8 7 8 10 8 10 10. A vertical bar line separates the two parts. To the right of the bar line, the text 'BAlt.' is written. Above the top staff, there are additional fingerings: 7 7 8 7 8 10 8 10 10 and 8 10.

Handwritten musical notation for the second system. The top staff shows a guitar fretboard with fingerings: 7 7 9 7 9 10 | 9 10 12 10 12 14 12 14 15 14 15 17 15 17 19. The bottom staff shows a bass line with fingerings: 9 7 8 7 8 10 8 10 10. A vertical bar line separates the two parts.

